

Creating a Contact Sheet in Photoshop

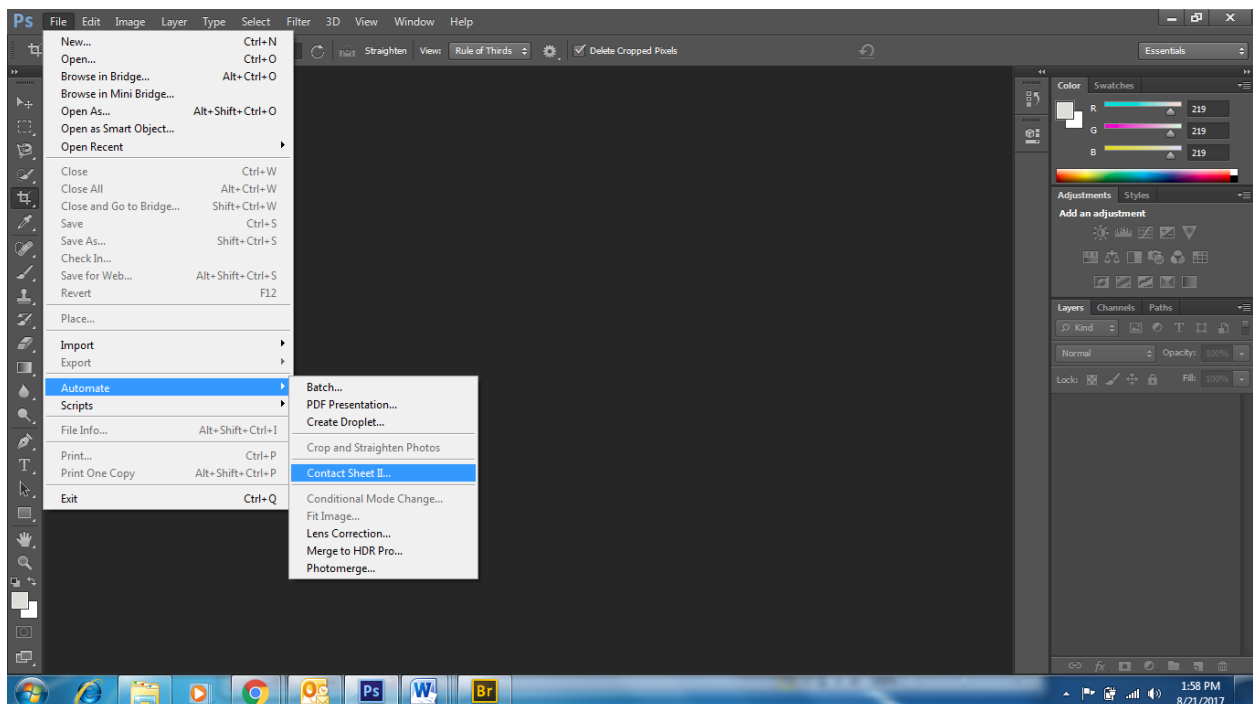
*Contact sheets should show the photographs you took for each of your projects.

Follow these steps to create your contact sheet in Photoshop

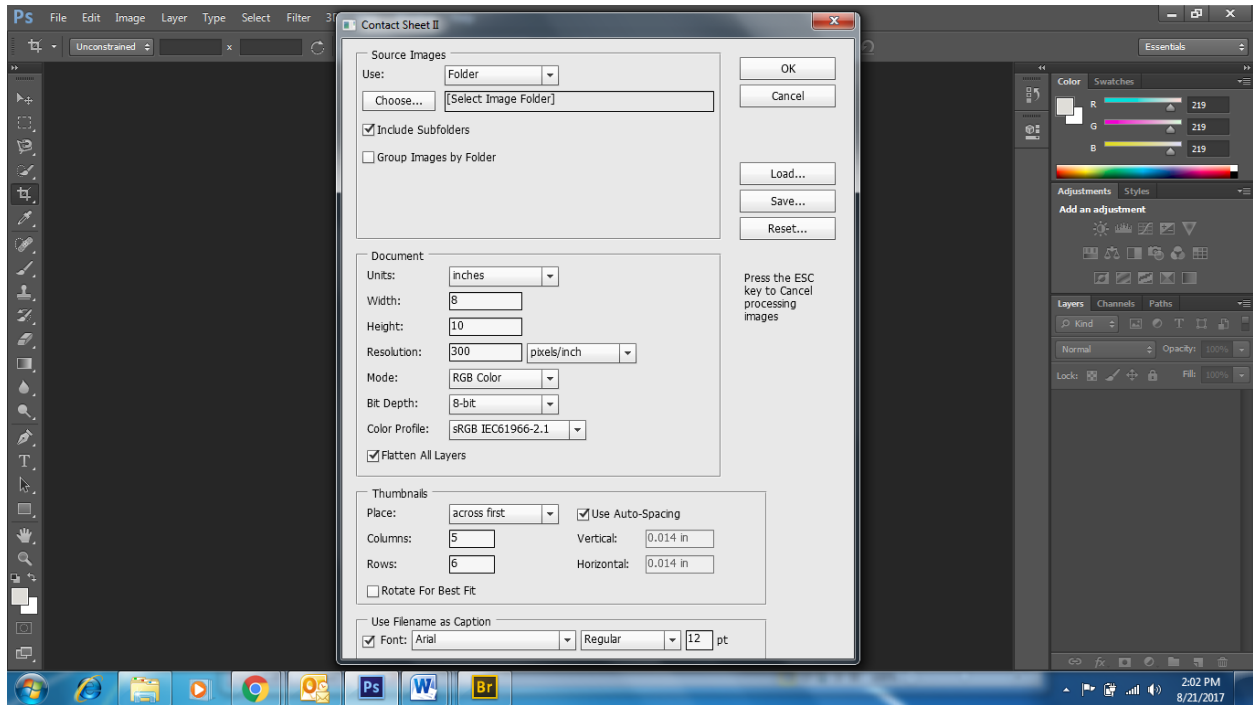
Once you save all photographs in your folder on the Desktop, complete the following

DIRECTIONS

1. On your desktop create a folder that has the 10 photographs you selected for this assignment.
2. Go to FILE > AUTOMATE > CONTACT SHEET II



3. Select the folder for your images and use these settings (You can uncheck Include subfolders if you have none)



4. Use these settings & sizes, and save the contact sheet in your folder for the assignment. Label accordingly – name_assignment_period. Every assignment will require a contact sheet to show your work. Once the assignment is complete and turned in, move the folder to your H Drive, where you have all of your class files.