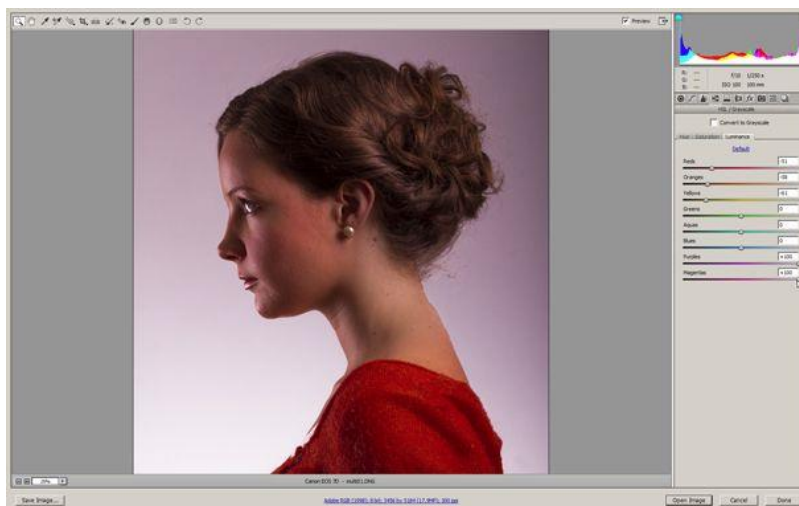
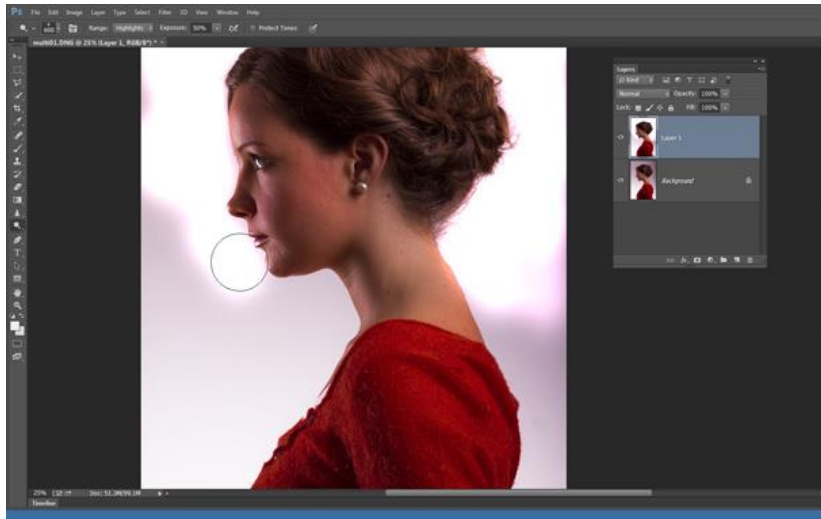


Tutorial: Creating a Surreal Self Portrait

In this quick double exposure portrait tutorial you will learn how to combine images with easy Blend mode effects to create striking, dream-like pictures. Multiple exposure effects are a great way to creatively combine two or more images. Traditionally, double exposure portraits were made by exposing the same frame of film more than once. Photoshop's *Screen Blend* mode works in much the same way by multiplying the light values on one layer with those on the layers below. So the scene can only get brighter, never darker, and white areas stay white.

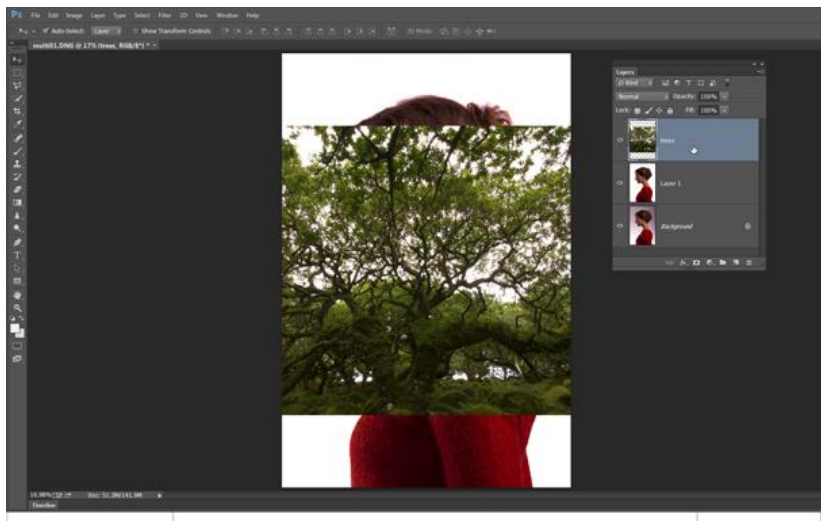


1. Begin with the original profile photo I took of you



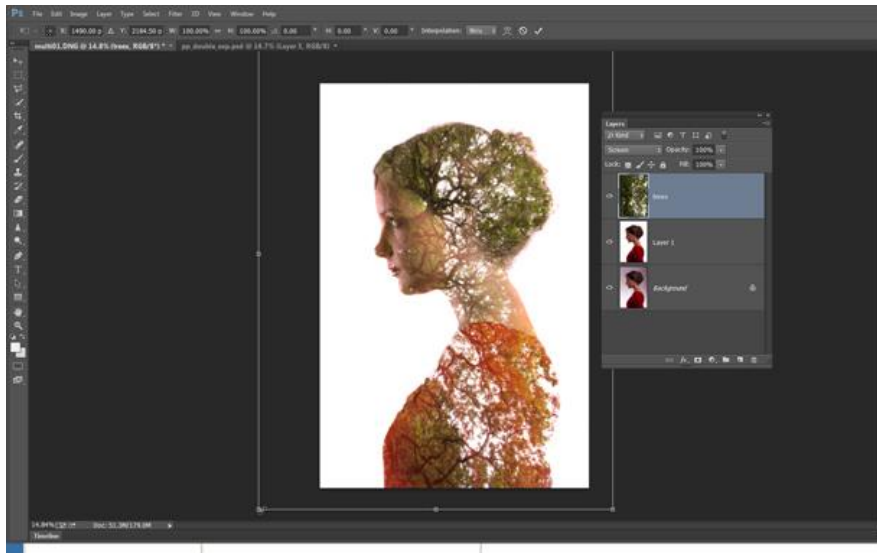
2. Dodge the background of the image

First you need to duplicate the background layer. To duplicate the layer, select **Ctrl+J**, or *right-click on the layer*. Next, select the dodge tool from the Tools panel. In the Options bar at the top, set Range: Highlights, Exposure 50% and uncheck Protect Tones. Choose a soft-edged brush tip and paint over the background to make it completely white, using **]** and **[** to resize your brush tip as you paint. Use your history panel to correct mistakes in your dodging.



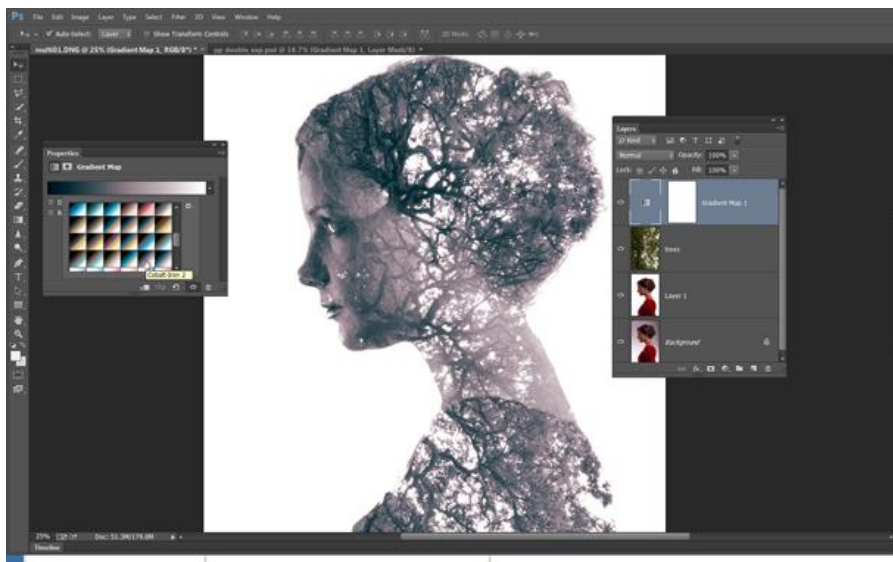
3. Drop in the background image

Open the .jpg image you have chosen for your background. then go to the Layers panel and right click the background layer. Choose Duplicate Layer. Select **Ctrl + A** to select the entire image, then **Ctrl + V** to paste it onto your background copy. Go to the layer image and rename the top layer with what the image is. We'll now merge the trees with the underlying layer using a Blend mode.



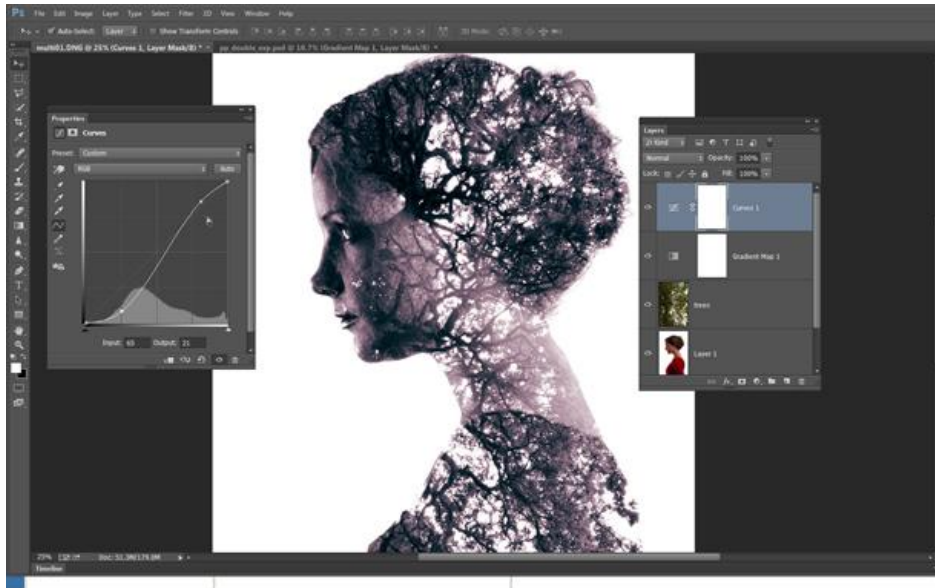
4. Rotate and resize

Click the Blend mode drop-down menu at the top of the Layers panel and choose Screen to blend the trees with the portrait below. Next hit Ctrl+T to enter Free Transform mode. Use the bounding box to rotate and resize the layer to find a pleasing angle for the trees that covers the entire portrait. When you're happy, hit Enter to apply.



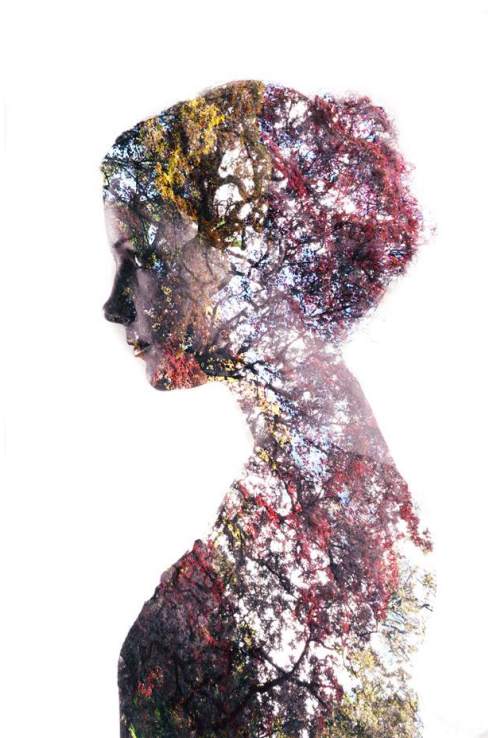
5. Tone the image

Click the Create new adjustment layer icon in the Layers panel and choose Gradient Map. In the Properties Panel, click the gradient preview drop-down menu, then click the cog icon and choose Photographic Toning. Click Append, then select the Cobalt-Iron 2 preset from the list. This converts the image to near-monochrome.



6. Boost contrast

Click the Create new adjustment layer icon again and choose Curves. Plot an S-shaped curve to boost the contrast of the image by dragging one point down near the bottom of the diagonal curve line, and a second point up near the top of the line. The more pronounced the S-shape, the greater the contrast boost you will apply.



Done!